

**Six Solutions**



Power | Prestige | Precision

**REMEDIAL CAPABILITIES**

---

# Contents

<b>About Us</b>	<b>3</b>
<b>Core Capabilities</b>	<b>4</b>
<b>Concrete Remediation</b>	<b>6</b>
<b>Hydro Demolition &amp; Surface Demolition</b>	<b>7</b>
<b>Cathodic Protection System</b>	<b>8</b>
<b>Gunitite &amp; Shotcrete</b>	<b>9</b>
<b>Crane Operation, Rigging &amp; Dogging</b>	<b>10</b>
<b>Scaffolding &amp; Access Systems</b>	<b>11</b>
<b>Core Drilling &amp; Wire Saw Cutting</b>	<b>12</b>
<b>Welding &amp; Steel Fixing</b>	<b>13</b>
<b>Why Six Solutions</b>	<b>14</b>
<b>Company Snapshot</b>	<b>15</b>
<b>Let's Work Together</b>	<b>17</b>

---



# About Us



## Who We Are

Six Solutions is a proudly majority Indigenous-owned, Western Australian-based company committed to delivering advanced, reliable, long-term structural repair and concrete remediation solutions across Australia's most demanding sectors—including marine, mining, energy, defense, infrastructure, and heavy industry.

We were founded with a clear purpose: to raise the standard in concrete remediation by delivering safe, innovative, and complete solutions—from diagnosis through to structural rehabilitation. Our team of experienced professionals combines deep trade knowledge with an unwavering focus on safety, quality, and client outcomes.

We are agile, solutions-driven, and deeply committed to creating long-term impact - not only for the clients and assets we serve, but also for the communities we represent.



# Core Capabilities



## Concrete Remediation (Form & Pour Repair)

- Structural concrete rehabilitation
  - Crack injection and delamination repair
  - Form and pour for slabs, beams, columns, walls, piers
  - Surface sealing, patching, and finishing
- 

## Hydro Demolition & Surface Preparation

- Robotic and manual hydro demolition
  - Scrabbling and high-friction surface prep
  - Paint, coating, and corrosion layer removal
  - Ideal for rework zones, rebar exposure, and load-bearing remediation
- 

## Cathodic Protection Systems

- Installation of sacrificial anodes
  - Hybrid CP and impressed current systems
  - CP for wharves, jetties, tanks, columns, and marine infrastructure
- 

## Guniting & Shotcrete

- Guniting and shotcrete for load-bearing surfaces
- Slope stabilization and tunnel lining
- Concrete encasement and structural strengthening
- Reinforced mesh and steel fixing integration



# Core Capabilities



## Welding & Steel Fixing

- Installation and tying of steel reinforcement
  - Structural welding for rebar, plates, and cages
  - Weld prep and post-weld inspection
  - Integration with concrete pour and repair teams
- 

## Scaffolding & Access Systems

- Erection, modification, and dismantling of scaffold
  - Design and installation for difficult-access or high-risk zones
  - Compliance with Australian Standard AS/NZS 1576
- 

## Crane Operation, Rigging & Dogging

- Mobile crane operation
  - Rigging for prefabricated elements and reinforcement
  - Dogging and signal coordination for complex lifts
- 

## Core Drilling & Wire Saw Cutting

- Core drilling for utilities, rebar access, and anchors
- Wire saw cutting for slabs, walls, foundations, and decks
- Precision cutting with minimal vibration and dust

# Concrete Remediation

## (Form & Pour Repair)



We are experts in full-scope concrete repair - from minor patching and surface cracking to major structural restoration. Our team delivers remediation using form and pour, hand-applied, and pour-back methods, ensuring integrity, strength, and longevity for your critical assets. We also specialise in bollard and marine fixture replacements for jetties, wharfs, and other coastal structures - ensuring structural integrity, compliance, and durability in some of Australia's harshest marine environments.



### Capabilities:

- Structural concrete rehabilitation
- Crack injection and delamination repair
- Form and pour for slabs, beams, columns, walls, piers
- Surface sealing, patching, and finishing

### Benefits:

- Prevents structural failure and asset degradation
- Extends service life of industrial and civil infrastructure
- Delivered with minimal disruption to site operations





Six Solutions

# Hydro Demolition & Surface Preparation



Using our ultra-high-pressure water systems, we specialize in delivering safe and precise hydro demolition and surface removal services for concrete and coatings. Our methods are perfect for exposing rebar, preparing bond surfaces with meticulous control, and effectively eliminating deteriorated or contaminated concrete structures. This technique also minimizes dust and vibration, making it ideal for sensitive environments and structural preservation.



## Capabilities:

- Robotic and manual hydro demolition
- Scrabbling and high-friction surface prep
- Paint, coating, and corrosion layer removal
- Ideal for rework zones, rebar exposure, and load-bearing remediation

## Benefits:

- Non-impact, vibration-free process
- No micro-cracking-preserves structural integrity
- Environmentally safer than jackhammering or blasting



# Cathodic Protection Systems



We offer comprehensive design, installation, and maintenance services for cathodic protection (CP) systems in reinforced concrete structures. Our expertise spans sacrificial anodes, hybrid CP solutions, and ribbon or mesh-based impressed current systems. These advanced methods effectively mitigate corrosion, extend the lifespan of structures, and are tailored for applications such as bridges, parking decks, marine facilities, and industrial environments.



## Capabilities:

- Installation of sacrificial anodes
- Hybrid CP and impressed current systems
- CP for wharves, jetties, tanks, columns, and marine infrastructure
- CP audits, testing, and ongoing maintenance

## Benefits:

- Significantly reduces corrosion of steel reinforcement
- Increases asset life by decades
- Industry-proven compliance with AS/NZS standards



# Guniting & Shotcrete



Six Solutions  
.....



We specialize in applying high-performance shotcrete, both wet and dry mix, for structural rehabilitation and surface protection. Our solutions are ideal for challenging vertical and overhead applications, ensuring long-lasting durability, enhanced load-bearing capacity, and resistance to environmental wear. This method is widely used in infrastructure restoration, tunnels, bridges, and retaining walls.



## Capabilities:

- Guniting and shotcrete for load-bearing surfaces
- Slope stabilization and tunnel lining
- Concrete encasement and structural strengthening
- Reinforced mesh and steel fixing integration

## Benefits:

- Fast, durable repair of damaged or weakened surfaces
- Ideal for inaccessible or complex geometry areas
- Reduces shutdowns and construction time



# Crane Operation, Rigging & Dogging



We supply licensed personnel and specialized lifting equipment for a full range of lifting operations, from structural component installations to load-shifting support during site-based remediation works. Our team ensures safe, efficient, and compliant lifting solutions, tailored to the demands of complex construction and infrastructure projects, including confined spaces and high-risk environments.



## Capabilities:

- Mobile crane operation
- Rigging for prefabricated elements and reinforcement
- Dogging and signal coordination for complex lifts

## Benefits:

- Minimises downtime during repair execution
- Ensures safe material handling in live industrial settings
- Delivered by trained, ticketed professionals



# Scaffolding & Access Systems



We provide certified scaffold services tailored for complex industrial settings and confined-space environments. Our team delivers fully compliant, engineered access solutions to support construction, maintenance, inspections, and shutdowns. With a focus on safety, efficiency, and adaptability, we ensure secure access in challenging conditions across sectors such as oil & gas, infrastructure, and heavy industry.



## Capabilities:

- Erection, modification, and dismantling of scaffold
- Design and installation for difficult-access or high-risk zones
- Compliance with Australian Standard AS/NZS 1576

## Benefits:

- Fast mobilisation and safe execution
- Enables safe access for multi-trade operations
- Full-service integration with all other scopes

# Core Drilling & Wire Saw Cutting



Our concrete cutting services offer precise, low-impact solutions for the removal and penetration of concrete structures, supporting installations, structural modifications, and investigative testing. Using advanced cutting technologies, we ensure clean, controlled results with minimal disruption, ideal for confined spaces, sensitive environments, and projects requiring high accuracy and structural integrity.



## Capabilities:

- Core drilling for utilities, rebar access, and anchors
- Wire saw cutting for slabs, walls, foundations, and decks
- Precision cutting with minimal vibration and dust

## Benefits:

- Enables upgrades and installations without over-demolition
- Maintains surrounding structural integrity
- Ideal for shutdown, retrofit, and live-site work



# Welding & Steel Fixing



Our experienced steel fixers and certified welders deliver precise fabrication, placement, and reinforcement installation services to support remedial, construction, and retrofit projects. From complex structural reinforcements to custom steelwork, we ensure high-quality workmanship that enhances durability, load performance, and compliance with project specifications across a wide range of infrastructure and industrial applications



## Capabilities:

- Installation and tying of steel reinforcement
- Structural welding for rebar, plates, and cages
- Weld prep and post-weld inspection
- Integration with concrete pour and repair teams

## Benefits:

- Stronger, longer-lasting reinforcement
- Seamless integration with remediation and construction teams
- Reduced project risk through skilled, in-house delivery

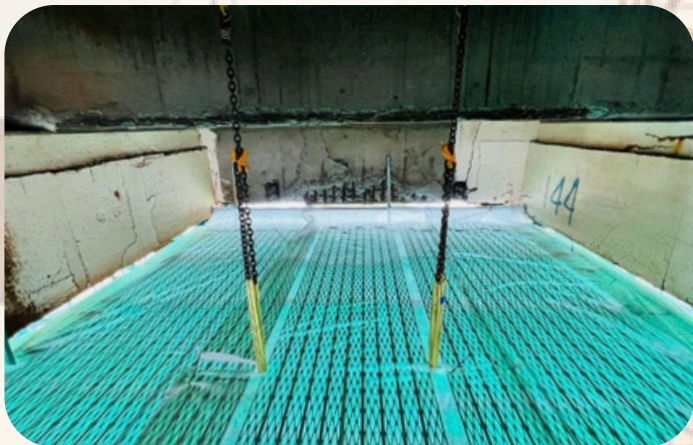


# Why Six Solutions?



## What Makes Us Unique

- **Majority Indigenous-Owned:** We are committed to Indigenous economic empowerment, cultural integrity, and social responsibility in everything we do.
- **Multidisciplinary Expertise:** All-in-one capability from demolition to rebuild-streamlining costs, communication, and safety.
- **Compliance-Driven:** Fully compliant with ISO, WHS, and site-specific frameworks. SWMS, ITPs, and safety documentation delivered before mobilization.
- **Client-First Delivery:** We align with your scope, schedule, and safety expectations-without compromise.
- **Proven Track Record:** Our leadership and core teams have worked on some of WA's largest infrastructure and resource projects.



# Company Snapshot



Six Solutions  
.....

## Business Name

**Six Solutions**

## Ownership

**Six Solutions**

## Indigenous Ownership

**Majority Indigenous-Owned**

## Location

**Western Australia (Available Nationwide)**

## ABN

**84 686 297 861**

## Director

**Matthew Bateman**

## Email

**matthew.bateman@sixsolutions.com.au**

## Phone

**0400 416 994**

## Website

**[www.sixsolutions.com.au](http://www.sixsolutions.com.au)**

# Let's Work Together



**Six Solutions is ready to partner with you on your next asset maintenance, remediation, or structural repair challenge. Whether you're a Tier 1 builder, facility manager, council, or mining operator - we bring elite technical delivery and the heart of a family-run, Indigenous enterprise.**

**Reach out today for capability presentations, tender support, or a site-specific quote.**